

SPECTRA

Synergie of Looks
and Longevity

STEP®

A Elevator's Parts &
Controller Manufacturer
Company





www.spectra-controls.com



About Us :

Spectra Controls was established in 2016 and started its activities with the production of the lift control. Today, Spectra Controls is the leader brand in service fields such as lift controller, integrated controller panels, emergency rescue systems, LOP and COP. In order to provide maximum customer satisfaction, Spectra Controls continues to develop itself constantly since they pay a great amount of attention to research & development, production, quality control, sales and after-sales services.

Our Safety

Compliance to safety requirements builds trust with the customers. Be it on ethical or business sense, safety is the first measure for any industrial product, however minuscule their role is. At Spectra Controls, we strive to abide by the stringent safety norms applicable to all products manufactured by us. Safety is an intrinsic design of the product, built and monitored by our quality team. Even during product design stage, our safety measures are put in to eliminate or greatly reduce the risk of product-related injuries.

Our processes are in line with standards, and are subjected to independent assessment. Continuous monitoring of product safety makes our product safe for customers. To create and maintain safety and quality, we stay current with new regulations, industry best practices and marketplace conditions. Be it specification or conformance quality.

INTEGRATED CONTROLLER

STEP[®] AS-360



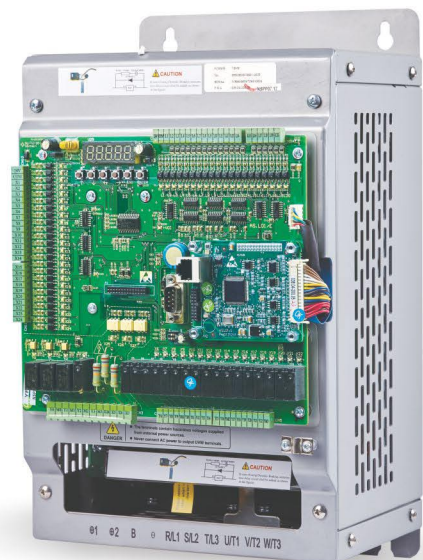
↑↑
Elevator Parallel
Integrated Controller



↑↑
Geared Controller

Main Features

- Perfect integration of control and drive of elevator leads to compact structure, few wiring, high reliability, easy operation and cost efficiency.
- Double 32-bit MCU combines the elevator control and motor control.
- Redundant safety design, double safety protection for control and drive.
- All parallel input and output.
- Support one main contactor solution.
- Support gear and gearless motor.
- Use PIM module for hardware, lower loss in switch on and off and longer lifetime.
- Creative Zero-speed torque compensation technology provides the elevators with good starting ride quality without installing weighing devices.
- New PWM dead-zone compensation technology brings less energy loss.
- Dynamic PWM carrier modulation technology brings less motor noise.



↑↑
Parallel Integrated VVVF Drive

INTEGRATED CONTROLLER



↑
Elevator Serial
Integrated Controller

STEP® AS-380



↑
CAN Bus Integrated
VVVF Drive

Main Features

- Perfect integration of control and drive of elevator leads to compact structure, few wiring, high reliability, easy operation and cost efficiency.
- Double 32-bit MCU combines the elevator control and motor control.
- Redundant safety design, double safety protection for control and drive.
- CAN bus communication make the whole system easily, fast and reliable.
- Support traditional group control and destination dispatching control.
- Support one main contactor solution.
- Support gear and gearless motor.
- Use PIM module, lower loss in switch on and off longer lifetime.
- Creative Zero-speed torque compensation technology provides the elevators with good starting ride quality without installing weighing devices.
- Close-loop vector brings higher performance in control.
- New PWM dead-zone compensation technology brings less energy loss.
- Dynamic PWM carrier modulation technology brings less motor noise.

UPS & ARD

Lift UPS
Automatic Rescue Device



Lift ARD
Automatic Rescue Device



5 HP to 50 HP



Lift UPS
Automatic Rescue Device

- Specially designed for lift and elevators.
- Single card design and its easy to repair.
- Micro-controller based CC-CV based charger which reduces battery failure and maximises battery life.
- Reliable and rugged design.
- Zero change over for smooth operation.
- For all integrated panels like Monarch, Arkel, Elecon etc.

Lift ARD
Automatic Rescue Device

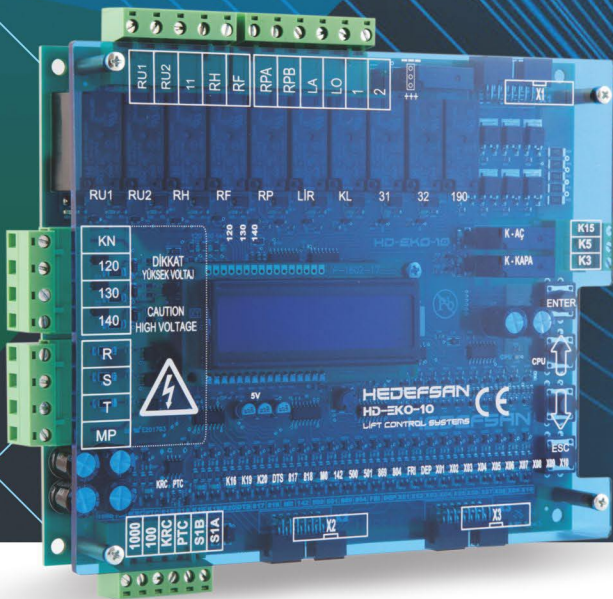
- Rugged and reliable system.
- Specially designed to work on all elevator panels.
- Inbuilt batter supported.
- 7 stage charging for better battery health at low AH battery (7AH - 26AH0).
- Single and dual phase output.
- Incorporated with Microchip 32 bit DSP engines.
- Cold start through mains supported.

ARD / iLIFT Rescue Devices

Model	Unit	ARD / iLIFT				
		5HP	7.5HP	10HP	15HP	20 HP
Battery Voltage	V	48 (7AH)	48 (7AH)	48 (14AH)	96 (26AH)	96 (26AH)
Backup Time	Unit	2 Minutes				
Change Over	Unit	ARD (12 Secs) / iLIFT (<10ms)				

LIFT CONTROL with ARD

HEDEFSAN® HD EKO-10 Controller with ARD

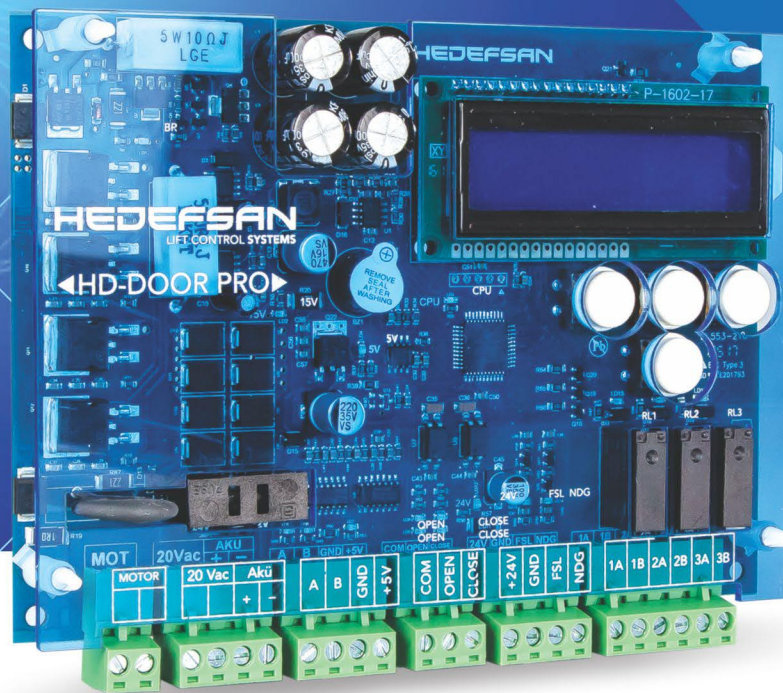


Technical Specifications

- Supports up to 10 floors, option between a up or down collective, or full collective control.
- Includes an automatic door controller.
- Call buttons and lamps require only one shared wire.
- Simple and error free installation due to included terminals, economical and time saving.
- Cabin serial communication output.
- All parameters can easily be configured via LCD screen and keyboard buttons.
- Adjustable parking station and traveling time.
- At the waiting position, you can trace down and read off how long the lift worked after it's last maintenance via the LCD screen.
- Programming with password protection, code protection against unauthorized using.
- Position information by Pulse-bi-stable switches.
- Adjustable maintenance time, and warning on LCD screen when maintenance required.
- The function of manual movement at low speed by using program buttons.
- Short - circuit protected display outputs can be adjusted to every floor.
- For lifts that have only one fully automatic door, the floor of the position of the automatic door can be chosen.
- The display outputs are changeable to grey-code or binary outputs.
- Overload warning signal.
- At inspection the movement to limit switches or exact floor level can be chosen.
- Adjustable car lamp time, lock wait time, wait at floor time, max high speed time and max low speed time.
- Outputs for direction arrows, out of services signal and busy signal via 5A relay, a signal common input for these outputs.
- Related to request, when power returns after a power loss, the car moves to the first floor.
- Electronic control of phases, phase order and PTC (motor temperature). errors of these controls shown via LCD on board, turning off function by choosing the parameters, adjustable phase level sensitivity.
- Warning signal on LCD screen when the door is open for a long time or when the stop return circuit is not detected for a long time.

AUTOMATIC DOOR CARD

HEDEFSAN® HD DOOR PRO Automatic Door Card



Technical Specifications

- HD DOOR PRO provides complete hold of the motor with its 4 region motor control and high resolution encoder input hardware.
- It allows swift but comfortable motion of doors with its software that provides 5 softening in travel ramps and which has the algorithm that does not require limit switches.
- It provides features for auto-learning of door travel limits without open-close limit switches.
- In order to work with the control panels in complete harmony it can generate "Doors are completely open", "Doors are fully Closed" and "Obstruction or photocell detected" signals. These signals enable it to work for fire lift doors.
- A nudging function is included with reduced speed closing with sound alert after a long time photocell interrupt.
- In case of mains failure, it can get the power from 2 pcs 12V batteries or 24VDC external supply. The emergency supply type can be selected easily via a jumper on board.
- HD DOOR PRO protects the battery from over-charge with a smart battery charge system. After an emergency opening with battery supply.
- HD DOOR PRO goes into sleep mode and protects the batteries from over-discharge.
- With a floor level signal input, doors can be kept closed until the cabinet is moved to the just floor during emergency evacuation.
- It provides many functions and parameters for manufacturing companies that enable application flexibility, like motor reduction ratio, motor revolution, motor sheave circumference and skate open zone.
- It provides user friendly parameter setting with speed units in cm/s and travel distance units in cm.
- It provides a counter for the information of opening-closing times.
- It provides a parameter menu which has access levels for security, user/customer needs and easy adjustment. It has open-close limited contacts.

CLASSIC SERIES



SM CLASSIC
COP / LOP

SM ECO CLASSIC
COP / LOP

-  CONTROL
-  DESIGN
-  ENERGY SAVING
-  EFFICIENCY

i TOUCH SERIES



SM
i TOUCH

White COP / LOP

SM
i TOUCH

Black COP / LOP



Grand SERIES



SM *Grand*
COP / LOP

SM *Grand*
COP / LOP

DISPLAY



SM.04V16/A

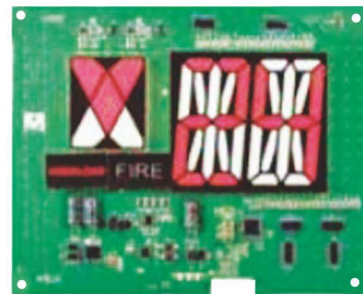
Illuminate Mode	Segment
Illuminate Color	Red, Orange, White
Install Mode	Vertical
Apply For	Hall
Boundary Dimension (mm)	162.5*72*8

SM.04V16/B

Illuminate Mode	Segment
Illuminate Color	Red, Orange, White
Install Mode	Vertical
Apply For	Car
Boundary Dimension (mm)	213.4*109.2*20

SM.04V16/G

Illuminate Mode	Segment
Illuminate Color	Red, Orange, White
Install Mode	Horizontal
Apply For	Hall
Boundary Dimension (mm)	117*64*8



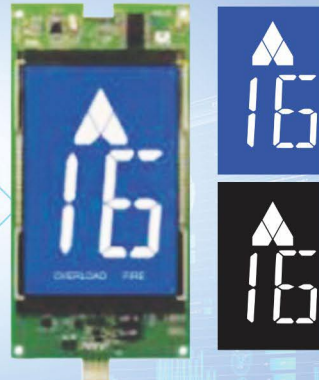
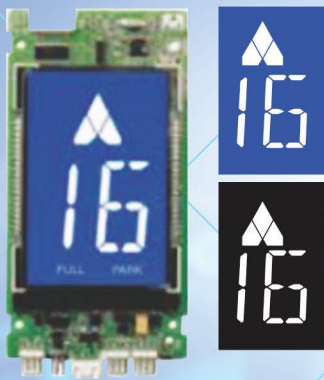
SM.04H16/A

Illuminate Mode	Segment
Illuminate Color	Red, Orange, White
Install Mode	Horizontal
Apply For	Hall
Boundary Dimension (mm)	217.9*86.2*8.4

SM.04H16/C

Illuminate Mode	Segment
Illuminate Color	Red, Orange, White
Install Mode	Horizontal
Apply For	Car
Boundary Dimension (mm)	151*129*20

MONOCHROME



SM.04VL16/X

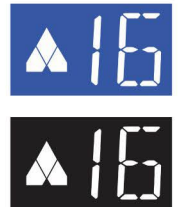
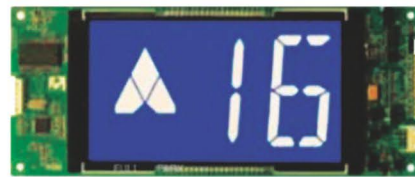
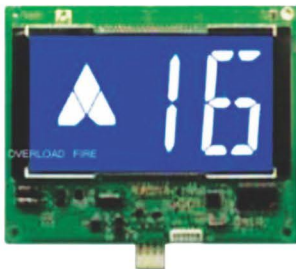
Display Size	4.3"
Illuminate Color	White on Blue White on Black
Install Mode	Vertical
Apply For	Hall
Boundary Dimension (mm)	192.9*115.4*25

SM.04VL16/Y

Display Size	6.4"
Illuminate Color	White on Blue White on Black
Install Mode	Vertical
Apply For	Car
Boundary Dimension (mm)	213.4*109.2*21

SM.04VL16/08

Display Size	3.2"
Illuminate Color	White on Blue
Install Mode	Vertical
Apply For	Hall
Boundary Dimension (mm)	117*64*8



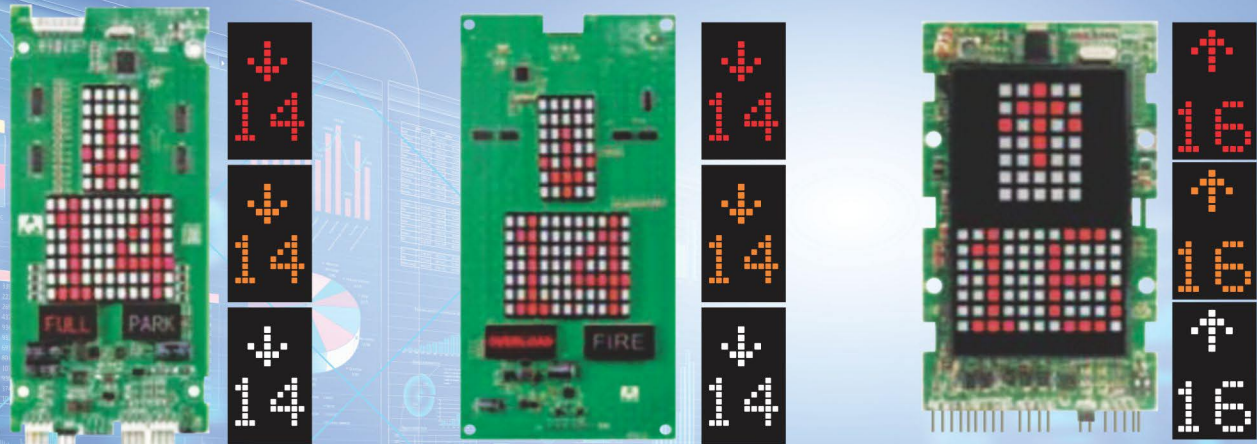
SM.04HL16/H

Display Size	5.7"
Illuminate Color	White on Blue White on Black
Install Mode	Horizontal
Apply For	Car
Boundary Dimension (mm)	151*129*20

SM.04HL16/D

Display Size	5.7"
Illuminate Color	White on Blue White on Black
Install Mode	Horizontal
Apply For	Hall
Boundary Dimension (mm)	218*86.2*9.4

DOT MATRIX



SM.04VLS/12

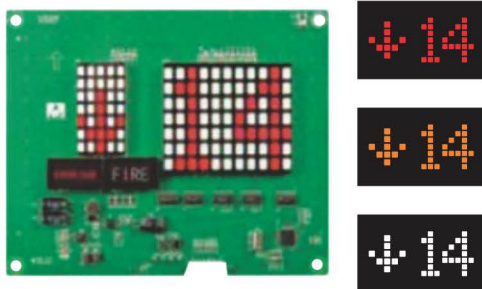
Illuminate Mode	Dotmatrix
Illuminate Color	Red, Orange, White
Install Mode	Vertical
Apply For	Hall
Boundary Dimension (mm)	162.5*72*7.7

SM.04VS/13

Illuminate Mode	Dotmatrix
Illuminate Color	Red, Orange, White
Install Mode	Vertical
Apply For	Car
Boundary Dimension (mm)	213.4*109.2*20

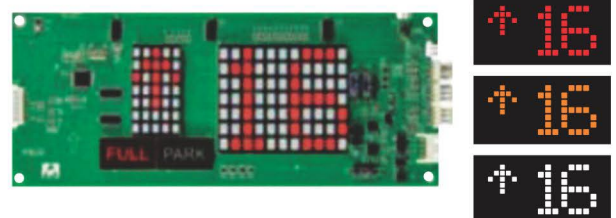
SM.04VS/09

Illuminate Mode	Dotmatrix
Illuminate Color	Red, Orange, White
Install Mode	Vertical
Apply For	Hall
Boundary Dimension (mm)	117*64*8



SM.04HS/N

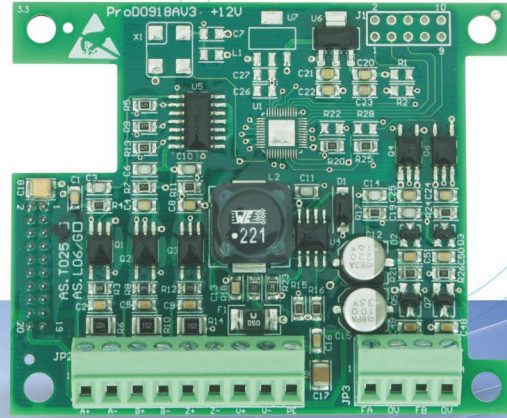
Illuminate Mode	Dotmatrix
Illuminate Color	Red, Orange, White
Install Mode	Horizontal
Apply For	Car
Boundary Dimension (mm)	151*129*20



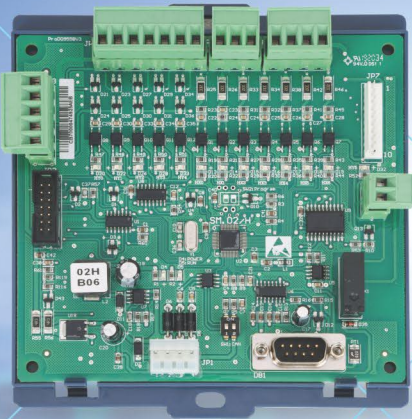
SM.04HS/L

Illuminate Mode	Dotmatrix
Illuminate Color	Red, Orange, White
Install Mode	Horizontal
Apply For	Hall
Boundary Dimension (mm)	217.9*86.2*7.3

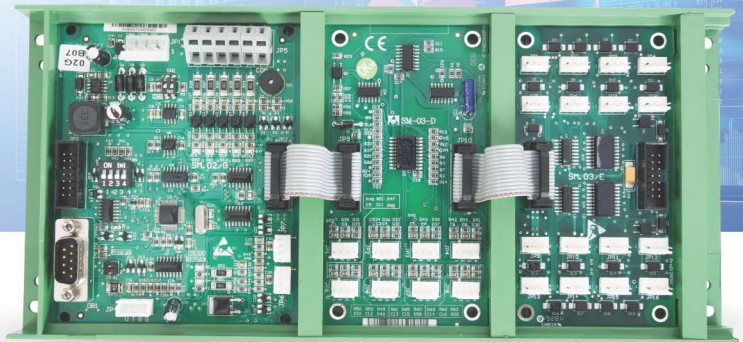
CARD



AS T025



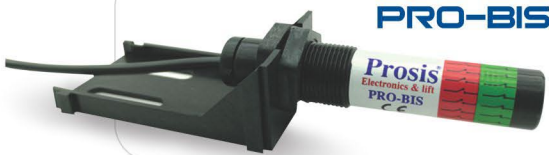
SM 02/H



SM 02/G

SM 03/D

SM 03/E



Magnetic Schalter



SM 08/G
Hand Held Operator



MP3
Voice Announcer

Elevator IOT



Elevator-Star e Box

HEDEFSAN®

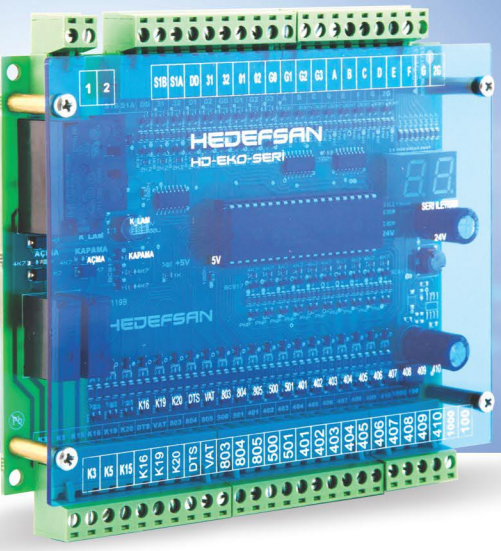
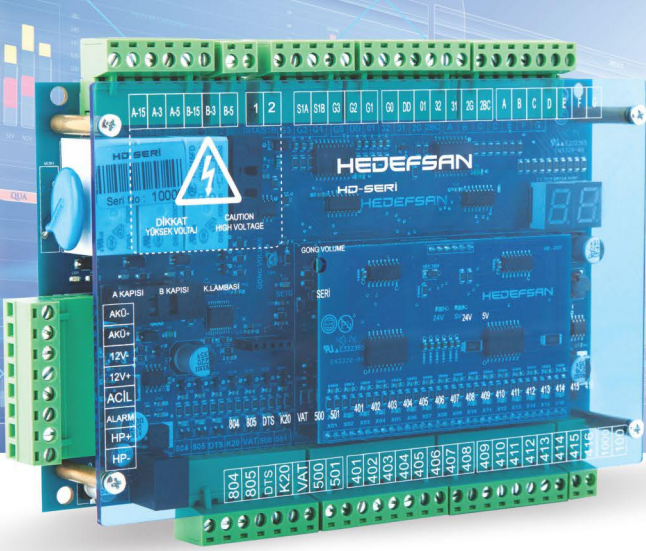
HD SERI

Cabin Serial Connection Card

HEDEFSAN®

HD EKO-10 SERI

Cabin Serial Connection Card



Technical Specifications

- Car Calls.
- Display outputs.
- Overload and full load inputs.
- Gong signal.
- Direction arrow outputs.
- Car lamp output.
- Automatic door opening and closing inputs.
- In inspection, up/down movement buttons inputs.
- Binary / gray-code outputs for LCD screens.
- It proves minimum wire connection from control panel to car.
- Charge unit that does not exhaust the battery.
- Adjustable sound alarm and gong signal level.
- Emergency lighting output.
- +12V and -12V terminals.
- Extra automatic door card inputs and output relays (2nd automatic door) HD SERIES.
- Programmable inputs and outputs.

- Car Calls.
- Display outputs.
- Overload and full load inputs.
- Gong signal.
- Direction arrow outputs.
- Car lamp output.
- Automatic door opening and closing inputs.
- In inspection, up/down movement buttons inputs.
- Binary / gray-code outputs for LCD screens.
- It proves minimum wire connection from control panel to car.
- Extra automatic door card inputs and output relays.

SPECTRA

Registered Office :

C - 169, Basement & 2nd Floor,
Okhla Phase - 1 Industrial Area
New Delhi - 110020

Sales. : +91 95999 33500, 98715 70018
87009 19788

Email :

spectracontrols@gmail.com
info@spectra-controls.com

Website :

www.spectra-controls.com
www.spectralopcop.com
www.spectracontrols.in

For South Region :

No.24, III Cross, RR Layout,
Swathantra Nagar, Near Swapna Apt - 1,
Virgonagar Post, K R Puram,
Banglore - 560 049

For West Region :

Shop No. 29, Yashodeep Height,
Plot No. 15/14, Sector 29/C, Gothivali,
Rabale, Navi Mumbai - 400 701